

The Beltsville News

AN ALL-VOLUNTEER NEWSPAPER

PUBLISHED BY THE BELTSVILLE-VANSVILLE DISTRICT CITIZENS' ASSOCIATION, INC.

The Beltsville News
6001 Amundeville Rd.
Beltsville, Md. 20705

Vol. 61, Number 8

Beltsville, Maryland

August 2013

The National and World Treasure Here in Beltsville

By Wendy Goff

Dr. Joseph Spence was guest speaker at the Greater Beltsville Business Association breakfast on Wednesday morning, July 17, 2013. Dr. Spence is Director of the Beltsville Agricultural Research Service (ARS), a highlight of the Beltsville, Md. area. Dr. Spence has been with the ARS since 1993 and presented the various ways that the ARS has contributed to research and development in the areas of human nutrition, plant and crop sciences, animal sciences, food safety, hydrology, remote sensing and natural resources.

This USDA facility began in 1910, and once had as many as 14,000 acres of land appointed for its use. Today it is approximately 7,000 acres with around 500 buildings. It employs 260 principle investigators, 1,000 Federal employees, and around 1,000 visiting scientists, students, and post docs. It receives \$133M appropriated funds/year and \$25M in extramural support/year.

The Agricultural Service includes the Belts-



Dr. Joseph Spence speaking at the Greater Beltsville Business Association breakfast. (Photo by Jay Williams Design Company)

ville Agricultural Research Center (BARC), Beltsville Human Nutrition Center, and the US National Arboretum. A major focus of the research facility is food security and the

threat of food shortages, working to discover new and unique ways to stay ahead of pests, pathogens, and changing weather patterns that jeopardize both crops and livestock.

Notable inventions by BARC, other than the 1934 development of the world famous Beltsville Small White Turkey, are often overlooked by the public, but include items such as DEET the most common active ingredient in insect repellent, biodegradable plastic made from discarded chicken feathers, and remote sensing from satellite images and drones to detect nutrient deficiencies in soils and environmental conditions such as soil erosion. Beltsville scientists were also the ones to show that trans fats in foods raise serum cholesterol and identifying trans fats is now a requirement for food labels.

Some of the very unique activities of BARC are the "What We Eat in America Survey," which documents the dietary intake of people and how it may be affecting various health

TREASURE continues on page 2

PRSRST STD
U.S. POSTAGE
PAID
Permit #3173
Beltsville, MD

**NEXT ISSUE:
Submissions Due
No Later
Than:
August 21
Paper Out:
August 31**

On the Agenda

By President Karen M. Coakley

The Citizen's Association will not meet in August however there are several community events.

National Police Night Out will be celebrated at the District 6 Police Station, 4321 Sellman Rd., Beltsville, Md. on Tuesday, August 6th 6-8 p.m. There will be a variety of exhibits such as K-9 demo's bomb robot, radar and laser station, drug displays, fire safety displays, information on property ID protections and Child and Senior ID programs. Free eye exams will be performed by the Beltsville Lions Club as well as blood pressure checks by Beltsville Adventist Church. There will also be performances from local Eleanor Roosevelt and High Point High School students. Volunteers are still needed to help with this event. If you can help out for an hour between 5-9 p.m. please call or email me, my contact information is below. This is a great way for students to receive volunteer credit hours.



Karen Coakley

Some safety tips to consider: 1) Check your car when you get out make sure you have not left a child or pet in the car. It only takes a few

COAKLEY
continues on page 7

Beltsville Briefs

Kingdom United International Church in Beltsville to Hold Community Outreach Event

Kingdom United International Church, located at 5012A Cook Road in Beltsville, will host its first annual Community Outreach event on Saturday, 31 Aug. from 7 a.m. to 4 p.m. The event will include car washes, yard sales and free food. The youth departments of the church have started a school supply drive to distribute much needed supplies to the needy in the community. We plan to donate all leftover items from the yard sale to charities in the area.

Interested parties may call Sis Simone at 240.882.6421 to rent a table space for \$15. The space plus a table is \$25. One may also call the church office at 301.595.3710.

Mother's Morning Out Program

You can register your 2 or 3 year old for two mornings a week of learning, Bible stories, crafts and playtime in a loving Christian environment. Classes are Tuesday

BELTSVILLE BRIEFS
continues on page 6

Anthony W. Kotula, Ph.D.: Phi Tau Sigma Special Recognition Award Recipient

Anthony W. Kotula, Ph.D., Supervisory Research Food Scientist, Meat Science Laboratory, Agricultural Research Service, U.S. Department of Agriculture (retired) was the 2013 recipient of Phi Tau Sigma Special Recognition Award. Phi Tau Sigma - The Honor Society of Food Science and Technology, was founded in 1953 at the University of Massachusetts, and has members throughout the United States and many foreign countries.



Anthony W. Kotula, Ph.D.

"The Phi Tau Sigma Special Recognition Award shall be given to a Member of Phi Tau Sigma who has shown exceptional dedication to Phi Tau Sigma - The Honor Society of Food Science and Technology, as evidenced by significant accomplishments towards the goals and/or administration of Phi Tau Sigma." Dr. Anthony W. Kotula, Lifetime Member of Phi Tau Sigma, epito-

KOTULA
continues on page 4

Success Breeds Success

The Beltsville Boy and Girls Club 12 and under soccer team have won yet another championship, in what has become an annual tradition. Under the guidance and tutelage of Coach Bill Alfaro the team, which has remained mostly intact as they progressed by age over the years, has won multiple championships in the spring and fall seasons as well as annual tournaments. Each year they have outscored their opponents mightily on their way to regular season and post season success. This most recent title brings the total number to five champion-



Pictured Above (from left to right) Top Row: Bryant Pastor-Francisco Salvador-William Turcios-Roberto Villanueva-Edvin Villeda-Ikenna Ajene-Coach Bill Alfaro Bottom Row: Maurisio Sorto-Xavier Pleitez-Jason Barahina-Andre Vigil-Josue Gonzalez-Pablo Hernandez-Louis Velis

ships in the past four years. Congratulations to the team. We can't wait to hear about your future success next season.

Beltsville News has a newly appointed News Director, Rick Bergmann

Send news items to Rick at editorbvnews@gmail.com

Service & Repairs - All Makes & Models

PRECISION MD State Inspection

Engine Building Harley-Davidson
Trans. Building Indian

WORKS

Hours: Tues - Fri 12-6, Sat 10-3 Parts & Service
10745 Tucker St., Unit 3, Beltsville, Maryland 20705
301.937.5783

ROOF LEAKS

R. D. BEAN, INC.

COMMERCIAL ROOFING CONTRACTOR
1-800-242-8736

FOR ALL YOUR ROOF REPAIRS AND ROOF REPLACEMENTS

R.D. Bean, Inc.
Roofing Contractor Free Estimates
5105-13 Powder Mill Road Beltsville, MD. 20705-1900
Established 1967 301-937-0260 Fax 301-937-0958 Toll Free 1-800-242-8736
Commercial Industrial
www.rdbean.com

Share Your News!

Send your article submissions to News Director Rick Bergmann at editorbvnews@gmail.com

Like us on facebook MinutemanBeltsville

“Printing For The Job You Needed Yesterday”
One of America's Largest Full Service Printing Firms Since 1975

- Color Copies
- Pamphlets
- Flyers
- Business Cards
- Invitations
- Mailing Services
- Full Color Printing
- Computer Graphics
- Rubber Stamps
- Envelopes
- Letterheads
- Business Forms
- Digital High Speed Copying
- Resumes

FAST SERVICE AT THE RIGHT PRICE!

Beltsville
Ph: (301) 937-1904 • Fax: (301) 937-9583
10820-D Rhode Island Avenue
Beltsville, MD 20705-2570
<http://www.beltsville.minutemanpress.com>
email: beltsville@minutemanpress.com

Laurel
Ph: (301) 776-9550 • Fax: (301) 776-7309
335 Main Street
Laurel, MD 20707
<http://www.laurel.minutemanpress.com>
email: laurel@minutemanpress.com

25 Years Ago in the Beltsville News

By Phil Whitman

U.S. Air Force.

Extracted from the August 1988 issue

PhD Awarded

Kathryn L. Kotula was awarded a PhD from Cornell University with a degree in Food Sciences.

Dentistry Award

Walter M. Miller, DDS, received the Academy of General Dentistry's prestigious Mastership Award at a July 18 meeting in Chicago.

Wedding Announcement

William "Gene" Price was married to **Christina Marie Langer** on May 7, 1988 at Our Lady of Sorrows Catholic Church in Takoma Park.

New Arrivals

Patricia Lynn Rogers, daughter of **Philomena Coll** and **Joseph Timothy Rogers** was born July 7, 1988.

Service News

Airman Layman Hose, Jr. arrived for duty at Elgin Air Force Base in Florida.

Maxwell Jason Tanner, son of **Lynn Marie** and **Douglas Bennett Tanner** was born July 7, 1988.

Brian Battin was promoted to the rank of senior airman in the

Audrey Danielle Stine, daughter of **Gayle Avelison** and **Stewart Paul Stine** was born July 8, 1988.

Brian Charles Ludwig, Jr. son of **Michelle A.** and **Brian Charles Ludwig** was born July 17, 1988.

Obituaries

Terry Cooper Mohr, 28, died July 17, 1988 as a result of an automobile accident in Sanford, Fl.

Larry Francis Ferchak, 38 of Waldorf died June 28 of complications from leukemia.

Thomas Albert Burnett passed away July 25, 1988 in Beltsville.

M. Camilla Erickson of Beltsville, passed away July 25, 1988.

Allan R. Krick, Jr. passed away July 14, 1988.

TREASURE

continued from page 1

conditions, the "National Nutrient Database" and "Animal Improvement Database." In the 1980's, the "Germplasm Resources Information Network" (GRIN) was developed which is the world's most comprehensive database of agri-

culturally important plants. They also have large and unique collections such as insects, nematodes, soil microbes, fungi, parasites, and herbarium (collection of preserved plant specimens).

Some of the current research described by Dr. Spence includes bee research, stink bug control, and continued work in safeguard-

ing and improving food sources and their impact on human health. There are approximately 800 research projects at any given time being conducted and are listed on www.ars.usda.gov. The impact of the Agricultural Research Service is broad and affects our daily lives.

We may not realize it, but we all are better off for the work being done in our own backyard here in Beltsville. Many interesting questions and answers took place after the presentation. To see the PowerPoint that Dr. Joseph Spence used for his presentation, go to www.BeltsvilleBusiness.com/J.Spence.ppt

Author Wendy L. Goff, Independent Distributor of the Life-Vantage Corporation, the Leader in Nrf2 Science. www.lifevantage.com/livinglife2thefullest 410.570.1575

Beltsville News

PUBLISHED BY THE BELTSVILLE-VANVILLE DISTRICT CITIZENS' ASSOCIATION INC.

News: Rick Bergmann, editorbvnews@gmail.com, 1 Morton Place, Laurel, MD 20707. Enclose self-addressed stamped envelope if photo is to be returned. Accepted material may be edited. Letters to the Editor on local topics are encouraged. Names may be withheld upon request.

Advertising:

937-6796 Ted Ladd, 11722 Emack Rd., Beltsville 20705 • tedladd02@aol.com

Classifieds:

937-7954 Evelyn Adkins, 10418 44th Ave. Beltsville, MD 20705

General Information: 301-210-7443 Ext. 42, Phil Whitman

Subscriptions:

Send \$15.00 to Carolyn Scarcia, 11007 Emack Rd., Beltsville 20705

Business/Billing:

937-7954, 10418 44th Ave., Beltsville 20705, Evelyn Adkins

Distribution: 937-7765 (other) Carolyn Scarcia

Editor Emeritas: Sally Ehrle

Staff Listings

Managing Editor: Phil Whitman

News Director: Rick Bergmann

Advertising Manager: Ted Ladd

Classifieds: Evelyn Adkins

Business Manager: Evelyn Adkins

Circulation: Carolyn Scarcia

Supporting Staff Members: Jim Butcher, Ivy Christoffers, Karen Coakley, Rebecca Hutchings, Elizabeth Olson, Bill Raulin, Doris Shirey, Nancy Thrush, and Ann Wistort.

Circulation

14,000 copies published monthly; 10,000 mailed in the 20705 zip code (total saturation) and 4,000 pick up copies available at the Beltsville library, community center, selected stores, and churches.

Church & Hall Rentals
CHURCH AVAILABLE FOR WORSHIP SERVICE RENTALS
HALL AVAILABLE FOR:
Birthday Parties- Anniversaries
Weddings-Graduations
Retirements
St. John's Episcopal Church
11040 Baltimore Ave
Beltsville, MD 20704
Contact: Church Office
301-937-4292

Beltsville Business News - What's New for Beltsville

By Paul G. Zurkowski,
GBBA's Founder

The Greater Beltsville Business Directory will be mailed to over 10,000 Beltsville residents and Businesses. You may already have received it. In the process of building the directory several new ventures jumped out at us and are described below. When you get your copy of the directory, skim the different sections with an eye out for what else might be new in Beltsville for you, your family and your business.

A monthly column on business news for Beltsville readers will be provided each month. This is the first such article dealing with the new business ventures identified while producing the directory. Watch for it. Next month the article will describe an innovative solar energy project at Konterra's Sweitzer Lane Headquarters.

Sun Services, Inc. has invested in a Demolition and Construction Debris Recycling Center due to open this summer at its 11210 Somerset Avenue plant site in Beltsville

WAWA opened their new Food Market and gas station at 10515 Baltimore Ave in Beltsville about a year ago. The new traffic that was stimulated came as next-door neighbor **McDonald's** rebuilt their whole facility, a combined development enlivening the business neighborhood and raising expectation levels all along Baltimore Ave.

The site of a former BP gas station will soon house an **Auto Zone** store being built across Baltimore Ave. from WAWA and McDonald's continuing the development process along Beltsville's Main Street adding rising expectations for neighboring businesses.

Farther north on Baltimore

Ave. and opposite Costco is a new Center, St. Mary's Square, being built that will include **Aldi's**, **Panera Bread**, **TD Bank** and a number of other shops south of the intersection of Sellman Road and Baltimore Ave.

Two new north/south trains have been added to the service at the MARC train station along Baltimore Ave. just where **The Brickyard Station** development (Featured on the Front Page of GBBA's Business Directory) has risen, including a mixed use development offering housing and business sites. Developed by Jackson Shaw right where the ICC Intersection with Baltimore Ave. is being built. It's a great living and business location addition to the Greater Beltsville Community.

Mark Electronics, 11215 Old Baltimore Pike, is now open to and welcomes retail customers to its business that in the past served only wholesale and government customers. Check Mark Electronics' diverse & large inventory. Their large inventory and good prices make it a destination for many residents and businesses.

PowerUp Sports and Training sports and fitness services exemplify its services by offering extracurricular programs for home-schooled children. A large facility with a busy agenda is run by Cindy and Russ Hall and offers group strength and speed, high school, college and adult conditioning as well as baseball, softball, football and dodge ball team and individual programs. 8610 Cherry Lane in Laurel. A Greater Beltsville service just opened in 2013.

The Rising Sun Center across from the Beltsville Post Office just acquired a new tenant, **Carter Gold & Silver**. They buy Gold and Silver here in Beltsville and

operate a sparkling Jewelry business stocked in part with jewelry acquired in their gold and silver business. Some real bargains. Cameron Carter is an experienced young business owner you will benefit from knowing. 10800 Rhode Island Ave.

School teacher, Josh Peters, has just opened the **College Park Mixed Martial Arts** school at the Powder Mill Center, 11105 Baltimore Ave. offering Martial Arts Training plus what he calls, Bumble Bee Children's Martial Arts.

It may not be new to Beltsville but the electronic funds transfer service offered by **El Sombrito TexMex Restaurant** serves patrons interested in sending money home internationally and is definitely a valuable and unique community service. They serve first class food at 11510 Baltimore Ave.

NINI K Boutique opened in June 2013 offering women dis-

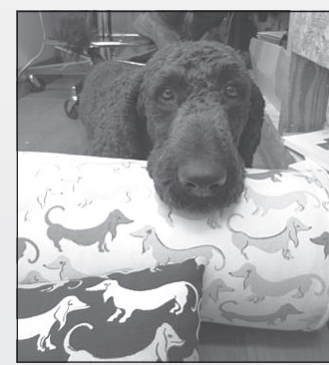
inctive clothing, both dressy and business, Italian shoes, jewelry, handbags and more. Georgia Chikamba chose Beltsville as the site for her new venture at 10415 45th Ave looking out over Baltimore Avenue and the Auto Zone site.

Beltsville Adventist Community Center recently began providing office space to Prince George's Dept. of Social Services to provide services to people in danger of losing housing or utilities for lack of payment or are in need of food stamps or other help. The office is open 9-12 Tuesdays and Wednesdays and is supported by Church volunteers headed by a Volunteer Office Manager, Joanna Murdick. The Office is located directly behind the church at 4200 Ammendale Road and represents the Adventist Community's commitment to supporting the Beltsville Community.

Watch for more Beltsville Business News in September.

DOG DAYS

Pet lovers are celebrating that decorating is finally going to the dogs. Brilliantly colorful greyhounds, dachshunds, labs, and terriers playfully adorn the latest fabrics and wall coverings at Will's Home Decorating (www.decoratmaryland.com). There are also fun fabrics with horses, cats, dragonflies, turtles and fish that look great on pillows, valances, drapery panels and reupholstery. For equestrian lovers there are even decorative trims in spectacular colors featuring riders on horseback.



Tucker relaxes on a dachshund pillow.

Designers Michael Richards and Valerie Kabelac of Will's Home Decorating have noticed a strong uptick of clients requesting vibrant fabrics with dogs and cats. What is so unusual is that the fabrics and wall coverings are no longer limited to safari type animals such as elephants, giraffes and lions. According to Michael, "Manufacturers have only recently responded to the change in tastes by introducing new updated animal designs along with recoloring many of the traditional animal patterns." Having so many animated dog prints to choose from made Valerie's job especially fun when she was recently asked to design a dog bed for a 70 pound golden lab named Max. Not only does the bed coordinate nicely with the room décor, but it has been strategically placed in view of the television so that Max will have a great vantage point so he can watch DOGTV, which is the first-ever TV network devoted to "stay-at-home" bowlers.

Will's Decorating
10508 Baltimore Avenue,
Beltsville, MD 20705
301-937-6100
www.decoratmaryland.com

BALLROOM RENTAL—Seats up to 400
Banquet Room w/dance floor—Seats 80
COVERED PICNIC PAVILLION
-Barbeque House & Horseshoe Pits
in a private, secluded area
Weddings/Anniversaries * Birthday Parties
Corporate Parties/Picnics * Bar/Bat Mitzvahs
Quinceanera Celebrations

COLLEGE PARK MOOSE LODGE #453
3700 Metzert Road, College Park
Call 301-935-5525 ask for Jimmie

Share Your News!
Send your article submissions to News Director
Rick Bergmann at editorbvnews@gmail.com

JORDAN Kitt's Music School

PIANO/KEYBOARD LESSONS

Free Trial Lesson

10762 Baltimore Avenue
Beltsville, MD 20705
(located in the Twin Chimneys Office Park)

301-595-2888 Ext. 1
Mblakely@jordankitts.com

FREE Delivery
*Certain Restrictions Apply See store for details.

Beltsville PHARMACY

SAVE!
We are less expensive than all the chain pharmacies!!!

We're YOUR community pharmacy. Come on in and meet Rakhi YOUR neighborhood Pharmacist.

- Fast, Friendly Service
- Free RX Deliveries
- Personal Support
- RX Price Matching
- Lg. Selection of Quality Goods & Products

We Do Daily Unit Dose FOR FREE

301-595-5939 **R**
www.beltsvillepharmacy.com
10820F Rhode Island Ave. • Beltsville
Across from the Post Office

MORE WAYS TO SAVE

CALL FOR A QUOTE

I can help you save even more than before.

Now Allstate has new auto rates just for Maryland. Save for owning your home, paying in full and more. Plus, ask about the new Allstate eSmartSM Discount - you can save an extra 10%. Call me today!

Al Freeman III
(301) 937-3700

10610 Rhode Island Ave., Ste. 202
Beltsville
alfreeman@allstate.com



Allstate
You're in good hands.
Auto Home Life Retirement

Call or stop by to see how much you can save.

Subject to terms, conditions and availability. Savings will vary. Allstate Indemnity Company, Allstate Property and Casualty Insurance Company; Northbrook, IL. © 2012 Allstate Insurance Company.

Neighbors in the News

Greetings Golfers, Sponsors, Supporters and Volunteers

IT'S THAT TIME AGAIN! Time to participate in the 2nd Annual Greater Beltsville Charity Golf Classic which will be held on Friday, Sept. 13, 2013 at the Cross Creek Golf Club. With your support and participation, we can make it another successful event as well as supporting your local Beltsville charities.

Click the following link for registration, sponsorship, golfer

and other information pertaining to the Tournament: www.beltsvillebusiness.com.

If you will be sponsoring the tournament in any way, please keep in mind high resolution logos/artwork must be sent to Craig Cooper ccooper@cciprinting.net no later than August 16th.

If you have any questions, please feel free to contact any of the Tournament Committee Mem-

bers below. We look forward to seeing you on September 13th!

Tournament Committee:

Sharon DeGrouchy, Chair,
240.417.7364
Craig Cooper, Co-Chair,
301.343.5584
Paul Zurkowski, 301.595.5562
John Moynihan, 443.864.7983
George Krzywicki

Prince George's County Memorial Library System Introduces New Summer Reading Program

HYATTSVILLE, Md. — Prince George's County Memorial Library System (PGCMLS) introduced "Dig Into Reading," a new summer reading program for 2013. The program is offered for preschool, elementary, middle and high school students, and adults of all ages. It began June 1 and ends Aug. 31.

"Research shows school summer breaks cause the average student to lose up to one month of instruction, referred to as the 'summer slide,' but increased summer reading reduces summer learning loss," explained PGCMLS Director Kathleen Teaze. "A key step to stopping summer slide is the development of high-quality reading programs such as ours to help children learn, grow and

develop."

The "Dig Into Reading" program for early readers up to 4-years-old prepares children for reading in the future. Preschool-aged children complete five activities during each month of summer, mark the completed activities on game boards and visit the library to claim prizes. Older age groups log the books they read during the summer and claim prizes based on their logs.

The program includes special events throughout the summer, including family game nights, movie nights, puppet shows, scavenger hunts, and arts and crafts. Each library branch holds its own events listed on www.pgcmcls.info.

It's not too late to sign up for the 2013 summer reading program

by visiting www.pgcmcls.info.

Prince George's County Memorial Library System provides materials and information for study and personal enrichment, offering strategies for life-long learning through access to varied media and professional guidance. The library system consists of branches in 19 communities including Accokeek, Baden, Beltsville, Bladensburg, Bowie, Fairmount Heights, Glenarden, Greenbelt, Hillcrest Heights, Hyattsville, Largo-Kettering, Laurel, Mount Rainier, New Carrollton, Oxon Hill, South Bowie, Spauldings, Surratts-Clinton and Upper Marlboro. (www.pgcmcls.info)

Traditional Funerals Monuments Cremation Service

Donald V. Borgwardt Funeral Home, P.A. Family owned and operated

4400 Powder Mill Rd.
Beltsville, Md. 20705-2751 Pre-Need Counseling
(301) 937-1707 By Appointment

www.borgwardtfuneralhome.com

KOTULA

continued from page 1

mizes this concept by contributing to the revitalization of Phi Tau Sigma in important and significant ways:

As Co-editor of the Phi Tau Sigma Newsletter for two years, and committee member since, Dr. Kotula initiated the monthly frequency of the Newsletter, and most of the feature sections. Tony has written for all the sections

and contacted others to contribute. The Phi Tau Sigma Newsletter is considered the premier resource for members, and non-members on the activities of Phi Tau Sigma, and feature articles of interest to everyone. (www.phitausigma.org, Click 'Newsletters')

Dr. Kotula envisioned and designed the new Phi Tau Sigma logo and initiated the use of Phi Tau Sigma ribbons at the annual meeting so members can readily

recognize each other.

Dr. Kotula conceived of and helped write the documentation for most of the awards Phi Tau Sigma uses to recognize excellence in its members. He also initiated the practice of the exchange of the Presidential Appreciation plaque or memento and gavel between the incoming and outgoing Presidents of our Society. Dr. Kotula has upheld and promoted the Purposes, and Constitution and By-Laws, of Phi Tau Sigma. He has increased membership by nominating quality individuals and by finding members from years ago.

In short, Dr. Anthony W. Kotula has shown significant accomplishments towards the goals and the administration of Phi Tau Sigma, as well as contributed in a meaningful and lasting way to the revitalization of the organization.

Tony and his wife Joan, both originally from Massachusetts, moved to Beltsville from Washington D.C. in July of 1958. They were active residents of Beltsville until 1994 when they moved to Storrs, Connecticut for their retirement years. They presently live in the house Tony designed and constructed. Thankfully their two children, Kathryn and Valerie, plus their three grandchildren (Valerie's daughters), Megan, Erin, and Bailey, live nearby.

THE CRESCENT NURSERY AND SUMMER PROGRAM

Est. 1959
11723 Chilcoate Lane, Beltsville, MD
(301) 937-3133

CHILDREN 2-6 YEARS
and
BEFORE/AFTER SCHOOL PROGRAM
Qualified staff. A caring environment. Specially planned programs. Snacks provided.
Open all year. All day.

Feel the Power of
Free Checking with Massive Interest

KASASA CASH

3.01% APY*
On CASH balances up to \$10,000

0.51% APY
On CASH balances over \$10,000

0.01% APY
when qualifications are not met

& NATIONWIDE ATM FEE REFUNDS*

OK, it may not help you leap tall buildings, but it's free checking that pays massive amounts of interest.

To earn interest & ATM fee refunds each month:
Each qualification cycle have at least 10 debit card purchases post and clear, have at least 1 direct deposit or automatic payment post and clear, access online banking and receive monthly e-statements.

MONEY ONE
FEDERAL CREDIT UNION

DO YOU KASASA?

Open now at moneyonefcu.org
or call us at 301.925.4600

Like us on Facebook www.facebook.com/MoneyOneFCU

*APY=Annual Percentage Yield. Minimum to open account is \$50. Annual Percentage Yield accurate as of 3/21/13. Rate tiers are as follows: 3.01% APY applies to balances of \$0.01 - \$10,000 and 0.51% applies to balances over \$10,000 if qualifications are met each monthly qualification cycle. 0.01% APY applies to all balances if monthly qualifications are not met. All balances will earn 0.51% - 3.01% APY if monthly qualifications are met. Rates may change after the account is opened. Fees may reduce earnings. Qualifying transactions must post and clear to the account during the monthly qualification cycle. Transactions may take one or more banking days from the date the transaction was made to post to an account. Intraday transfers do not count as qualifying transactions. ATM fee reimbursements up to \$30.00 provided only if qualifications are met within the monthly qualification cycle. Limit one account per SSN.

Federally insured by **NCUA**

Neighbors in the News

St. John's Church Will "Bless Backpacks"

Children of all ages will gather around the altar of St. John's Episcopal Church, Beltsville, to have their "Backpacks blessed" at worship services on Sunday, August 18, at 8 and 10 a.m. Members of the Beltsville community and beyond are invited and encouraged to participate in this special church service to kick-off the 2013-2014 School Year. "Because the public schools in Prince George's County open on Monday, August 19, we decided to start the school year off with our well-wishes and prayers, by blessing children's backpacks," says St. John's Rector, the Rev. Paula E. Clark. As a part of the service, donations of school supplies – pens, pencils, paper, crayons, and backpacks – given by parishioners for participants in the Transitional Housing program here in Prince George's County will also be blessed. The collection and donation of school supplies has been an annual event at St. John's for many years. The church has had a longstanding relationship of outreach and support to Transitional Housing. In addition, St. John's serves as a SHARE food program host site for families who wish to receive

groceries at significantly reduced prices.

This is the sixth year St. John's has had a blessing of the backpacks service, which focuses on celebrating children and families. To round out the day the 10:00 a.m. worship service will be followed by a festive family picnic. Church Senior Warden Ian Hutson says, "As parents and children gear up for a new school year, we believe it's important for the church to provide a wholesome day of family fun. Hamburgers, hot dogs, sodas, side dishes and festivities will be served up for all to enjoy."

St. John's Episcopal Church is located at the corner of Powder Mill Road, and Baltimore Avenue, 11040 Baltimore Ave in Beltsville, MD. Church services are held every Sunday morning at 8 and 10 a.m., with Children's Sunday school at 9:45 a.m., September –May. For more information about the "Blessing of the Backpack" service, picnic, and/or St. John's Episcopal Church, please call (301) 937-4292, or check their website at www.saintjohnsbeltsville.org.

Rosapepe's Report to Beltsville

By Senator Jim Rosapepe (D-21)

Join the Delegates and Me August 6 at the Beltsville Police Station

Delegates Barbara Frush, Josefine Peña-Melnyk, Ben Barnes, and I hope to see you Tuesday night August 6th, 6 to 8 p.m., for National Night Out. It will be held at the police station at Sellman and Montgomery Roads. Everything is free, and it's a great chance to show our support for our local police officers, see friends and neighbors, and display Beltsville's commitment to keep crime out of our neighborhoods.

New Principal for Beltsville Academy

As many Beltsville residents know, Beltsville Academy is a great school which had serious problems in leadership a few years ago. Rashida Edwards, principal for the past three years, has done a good job but is moving to another school this fall. Students, parents, and community leaders are sorry to see her leave. In response to concerns of the PTA, community leaders, and parents, the Delegates, Councilwoman Mary



Senator Jim Rosapepe

Lehman, and I asked the School Superintendent to open the process for selecting the new principal to community input. He agreed and a well-attended meeting was held at the school on July 11. We expect the new principal to be named soon, perhaps by the time this is published. Thanks to all those concerned parents and neighbors who spoke up.

Free Renovation for 100 Homes of Elderly and Disabled

Christmas in April is a national organization that renovates homes for the elderly and/or disabled for

free. Since its founding 25 years ago, the group has repaired 2,253 homes in Prince George's at a value of \$38,618,000. There is a limit to 100 homes per year locally, and applications are available at www.ChristmasInAprilPG.org. The deadline to apply is November 1, 2013 and more information is also available by calling 301.868.0937.

100% Pro-environment Voting Record for 2013

Last month, the Maryland League of Conservation Voters issued their report on the 2013 legislative session, and I was one of seven State Senators (out of 47) whose voting record they called 100% pro-environment. We made good progress this year – but there is much more to be done to fight global warming, clean up the Chesapeake Bay, and protect our parks and open space right here in our community.

Contact Us

As always, please let us know if there are other issues you have questions or thoughts about. And, of course, feel free to be in touch if we can be of help to you. Just email 21stDistrictDelegation@gmail.com or call 301.858.3141.

Obituaries

Butler, James R.

James R. Butler, longtime Beltsville resident, passed away on July 12, 2013. He was retired from Verizon after 39 years of service as a second level supervisor. He is survived by his loving wife, Eleanor, of 56 years, daughter Evangeline (Ryder) of Springfield, Va., son Vernon of Fairfax Station, Va. And five grandchildren: Amanda (Cade), Melissa (Harris), Carolyn (Ryder), Natalie and James Butler.

Interment was private at Mt. Hebron Cemetery, Winchester, Va. Memorial contributions may be made to the Sidney Kimmel Cancer Center at Johns Hopkins Bayview Medical Center, Baltimore, MD 21224.

Morris, Patrick Lynn

Patrick Lynn Morris, 63, of Lively, Va. died May 21, 2013. He was a retired Psychotherapist in Maryland and Washington, D.C. He was born on July 19, 1949 in Parkersburg, WV. when his family resided in West Union, WV. From the age of 8, Patrick grew up in Beltsville, Md. where he attended High Point High School, graduating in 1967. He attended the University of Maryland-College Park where he graduated with a BA in psychology in 1971. He earned his Master's degree in Counseling Psychology in 1977 from Bowie

State University. He was awarded the PhD in Clinical Psychology & Counselor Education by the Union Institute and University in 1992.

He was preceded in death by his parents, Lindsay Franklin Morris, Jr. and Lois Michael Morris of Beltsville. Surviving are his wife of 42 years, Sharon East Morris, his daughter, Nancy-Marie Morris Baublitz and her husband, Chris, and three granddaughters, Skye, Storm, and Starr, all of Lively, Va., a brother, Kelly J. Morris, of

Beltsville, a brother-in-law, Lewis East, of Washington, D.C., a first cousin, Nancy Sutton Thomas, of Parkersburg, Wv. and numerous other cousins.

Dr. Morris held various jobs with Youth Service Bureaus, had a private psychotherapy practice, and did consulting work with group homes. He retired in 2010 for health reasons.

He loved to fish and enjoyed spending time with his family.

Wood's Flowers and Gifts

Fresh Flowers • Beautiful Roses
Fruit & Snack Baskets • Plants
Dish Gardens • Orchid Plants • Gifts
Cards • Silk Flowers
Stuffed Animals • Balloons

Bring this ad into our store for a FREE wire service charge on any out of town order in the U.S.A., or a FREE local delivery. (Expires 8/31/13)

Wood's Flowers and Gifts

Family-owned and operated since 1938

9223 Baltimore Ave. College Park, MD 20740

One mile north of the University of Maryland (Next to Proteus Bicycles)

301-474-7000 | 1-800-671-6934 | www.woodsflowersandgifts.com

*Floral tributes
of all kinds
and daily
deliveries to
all local
funeral homes*

We now have H1N1 Vaccine in Our Clinic



**MEDWELL
BELTSVILLE
HEALTH
CLINIC**



CLIP & SAVE

**10% DISCOUNT
WITH AD**

A Full Service Medical Clinic

Compare Our Low Prices—Credit Cards Accepted
Korean & Spanish Speaking By Appointment

Routine, School
& Dot Physicals
Blood Work
Allergy Testing
Birth Control
Prostate Cancer
Screening

GYN & STD'S
Illness & Injuries
Flu Shots
HIV Testing
Workmen's
Comp.

**Affordable
Safe Weight
Loss
Program**

Walk-in Hours:
Mon. - Fri. 9-7
Sat. 10-4

4729 Sellman Rd.,
Beltsville, MD

Off R. 1 - Across
From Costco &
Behind KFC

301-595-2820



Catering & Hall Rentals
Knights of Columbus 2809
Cherry Hill Manor



50 Cherry Hill Road, College Park, MD

Wedding Receptions ■ Birthday Parties ■
Anniversaries ■ Banquets ■ Showers ■ Meeting Place
Quinceañera ■ Funeral Luncheons ■
Company Picnics with Pool Available
Country Club Atmosphere Food and Drinks

For Hall Rentals contact Enrique at 301-345-4076

For Grove Catering Contact Jay O'Hare at
202-306-7480 or pgc2809catering@gmail.com

Neighbors in the News



Pastor Daniel Mejia teaches the children about the bible during Vacation Bible School at Emmanuel United Methodist Church.

Vacation Bible Story is an Outstanding Success at Emmanuel UMC

Emmanuel United Methodist Church on Cedar Lane had another successful Vacation Bible School this year. There were approximately 75-100 attendees, both adults and children. Each evening they gathered together to make friends, sing, act and study the bible. The program has been led by Todd Reitzel and an

army of volunteers for the last few years and attendance has grown each time. Emmanuel also offers many other educational opportunities for everyone throughout the year. Every Sunday at 10:15 there are bible study classes for children in kindergarten through 12th grade as well as several offerings for adults. In September,

Todd will begin a new semester of the Youth Learning Fellowship, which is a Tuesday night program that offers homework help to students as well as a time of learning about the bible. You may find out more information about all of the programs at Emmanuel by going to their website at www.eumcbeltsville.com.

Wall-to-Wall Carpet • Remnants • Vinyl Rugs • Ceramic • Tile • Hardwood Floor

Mike's CARPET



- All Major Brands At Discount Prices!
- Shop-At-Home with Warehouse Prices!

Email: MIKE@MIKESCARPET.COM

11220 Baltimore Ave. Beltsville
(1/4 mile north of Costco)

CALL: 301-937-2221

LAMINATE FLOORING

\$1.99

Starting at 1 Sq. Ft

With this coupon - Expires 8/31/13

WALL-TO-WALL CARPET

\$1.99

Only 1 Sq. Ft

INSTALLED WITH PAD
(Minimum 40 sq. yds)

With this coupon - Expires 8/31/13

CALL TOLL FREE: 1-866-356-6787



Open for breakfast daily at 8 am

tj's of Calverton
RESTAURANT

Enjoy All American food
Served in a relaxing Atmosphere!!

Thanks to you we are Celebrating 28 years!

ENJOY 15% SAVINGS

Not valid
for breakfast

VALID FOR DINING ROOM ONLY * MAX VALUE \$5.00

GOOD FOR SEPTEMBER 2013

for full menu and more info please visit us at

www.tjsofcalverton.com

11607 BELTSVILLE DRIVE *BELTSVILLE MD * 20705

301-572-7117

Located in the Calverton Shopping Center

Kevin Hart's "Let Me Explain": A Movie Review

By Natasha Okpala

If you want a great, funny movie to watch before this summer is over, Kevin Hart's, "Let Me Explain" is the movie for you. It's hilarious, will have you dying laughing. You will definitely be enjoying yourself. Let Me Explain is the third movie/comedy show by comedian Kevin Hart. He is also known from his roles in movies like Soul Plane, Think Like A Man, Scary Movie 5, and many more.

Kevin explores many topics such as his recent divorce, his kids, his friends and many other things. The movie was shot in New York City at Madison Square Garden. Not a lot of comedians get the chance to perform at Madison Square Garden and this is why I believe that the movie is being

shown in theaters. He had an audience of 30,000 people, one of the largest audiences ever to watch a comedian.

Kevin Hart is well known for his comedy sketches about himself, his height, his children, and what he goes on with his friends and family. The movie is hilarious and will have you on the floor laughing from start to finish. His performance style is what really makes everyone laugh. There were some famous people in attendance. Celebrities such as Tariji P. Henson (actress), 2chainz (rapper), and Ashanti (singer/actress) were there.

The show was approximately 90 minutes. I don't want to spoil the movie for everyone, so I won't say what he really jokes about in the show. Just know that you will

not regret watching the movie. In my opinion, it was one of his best shows. I actually watched the film two times, it was that funny. Hart has a movie getting released in January of next year with rapper/actor/director, Ice Cube called "Ride Along".

Kevin Hart's shows and performances can be seen also on YouTube. He has approximately 360,000 subscribers and over a million views. I believe Kevin Hart is one of the greatest comedians. His style of performances and creativity make him stand out from other comedians and his loyalty to his friends and fans make him a very likeable celebrity. Go see "Let Me Explain"; it's worth the ticket and definitely worth the laughter. You will not regret it.

Beltsville Briefs

(Cont. from page 1)

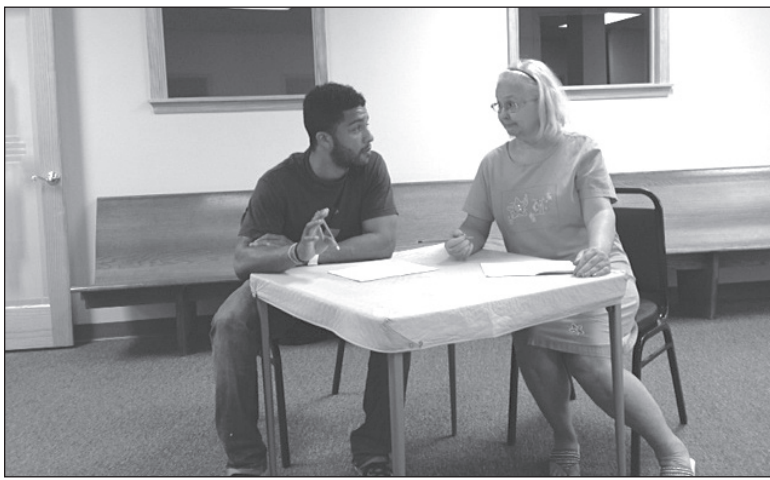
and Thursdays 8:30 -- 11:30 a.m. at First Baptist Church of Beltsville, 4700 Odell Road, Beltsville, MD 20705. Child must be 2 or 3 years by Sept. 1, 2013. Potty training is not required. Registration fees \$75.00/child with low monthly tuition costs for September - May. We are accepting reg-

istrations now. For more information call 301-937-7771.

St. Joseph's Crab-a-Thon

St. Joseph's CYO and Home & School Association proudly present the 9th Annual St. Joseph's Community Crab-a-Thon on Saturday, Sept. 21, 2013 at St.

Joseph's Parish Hall, 11011 Montgomery Avenue in Beltsville. Doors open at 6:30 p.m. and the Crab-a-Thon will be from 7 to 10 p.m. For detailed ticket information or sponsorship please contact Jackie Thomas at 301.938.4031.



Ryan Anthony Jones of District Heights and Donna Mertens of Beltsville rehearse for Beltsville Theater Project's production of *The Guys*.

Beltsville Theater Project

Rehearsals are underway for the September 11th opening of the THEATER PROJECT BELTSVILLE production of THE GUYS by Anne Nelson. The play was first produced by The Flea Theater in New York on December 4, 2001. The two cast members the play calls for were Sigourney Weaver and Bill Murray. The yearlong run later featured Susan Sarandon and Anthony LaPaglia and still later Marlo Thomas and Tim Robbins. A film version was released in 2003 with Weaver and LaPaglia. The Flea revived the New York production two years ago on the tenth anniversary of the attack.

In the TPB production, the two roles are played by Donna Mertens of Beltsville and Ryan Anthony Jones of District Heights, pictured here in an early rehearsal. In the play, a young fire captain and an editor struggle with their grief as she helps him prepare eulogies for the men's funerals - five in one week!

The hour and a quarter long one act play is to be followed by a "talk back" between director, Franklin Akers, Mertens, Jones and the audience. Four more performances will follow the opening night on Thursday thru Sunday, September 12 thru 15th. Evening performances are at 8pm and the final performance on Sunday is at 3pm. Tickets prices are \$10 general admission and \$8 for students, seniors, and military. Local first responders will be admitted free.

THEATER PROJECT BELTSVILLE is sponsored, as a public service, by the congregation of the Lutheran Church of the Abiding Presence at 10774 Rhode Island Avenue in the Beltsville Professional Center where performances will take place. Residents of Beltsville are invited to join in supporting TPB with donations and/or production assistance. Interested parties may contact director Franklin Akers by email at frank.akers@comcast.net.

COAKLEY

continued from page 1

minutes for the heat to kill them.
 2) Do not leave valuables in your car. We have had a spike in thefts from cars in the past few months.
 3) Is your smoke detector over ten years old? If the answer is yes, it

is time to replace it. As of July 1, 2013 you need a new "long life sealed-in battery smoke alarm. For more information check out www.beaherosaveahero.com

There are 2 free summer jazz concerts sponsored by the Beltsville Recreation Council. The dates are Saturday July 27th fea-

turing David Bach and Saturday August, 10th featuring Project Natale. Both concerts start at 7:00 p.m and are located at the Beltsville Community Center, 3900 Sellman Rd., Beltsville Md.

I can be reached at 301-937-3490 or karenmcoakley@msn.com

August is Sports Physical Month!

Get \$10.00 off a Sports Physical

with this coupon. Offer valid Aug. 1- Aug. 31, 2013.

No appointment needed. Quick & convenient service.



Here when you need us.

SecureMedicalCare



Open every day. Mon-Fri, 8 am to 8 pm; Weekends & Holidays, 10 am to 6 pm
 On-site lab, digital x-ray, & pharmacy services available for your convenience.

10452 Baltimore Ave., Beltsville, MD 20705 (1/2 mile north of IKEA) (301) 441-3355

securemedicalcare.com

Celebrating our 60th Year!



Commercial, Industrial, New Roofing & Re-Roofing
 Serving MD, DC & No. VA

Orndorff & Spaid Inc.

Roofing & Sheet Metal Contractors • Family Owned Since 1953
 11722 Old Baltimore Pike, Beltsville, MD 20705

**Call us now for a free estimate:
 301-937-5911 • www.osroofing.com**

**OH NO!
 I NEED A
 HANDYMAN**

**JOHN
 GARDOSIK
 HOME
 IMPROVEMENT,
 INC.**

...is licensed by the State of Maryland, is fully insured and has been in business as a certified remodeling contractor since 1987.

I specialize in drywall/plaster repair and painting but am fully qualified in other trades.

Let me help you enjoy your home more by addressing the little problem areas.

HANDYMAN SERVICES

Repairs	Remodeling
Painting	Drywall
Ceramic/vinyl tile	Windows & doors
Furniture assembly	Carpentry

301-699-5273
jgardosik@verizon.net

MHIC 24718

ROLEN
HEATING AND AIR CONDITIONING
LICENSED • BONDED • INSURED



SERVING: CALVERTON, MONTGOMERY & PRINCE GEORGE'S COUNTIES
"DAY & NIGHT EMERGENCY SERVICES"

Neighbors in the News

Gifts from Father

By Ingeborg Carsten-Miller

In August
I like
to remember
my father
teaching me
in the sea
how to swim,

to forget my fear
when high waves
come towering
holding on
to his hands
that keep me safe.

In August
I remember
safety comes
with knowledge
given to us
when young
and so ignorant.

The Songs of the Birds

Dreams playing through
stars
Awaken to flight
Morn's sounds scatter far
These shadows of night

The songs of the birds
Accompany dews
Their chorus refers
To mercies renewed

Sweet chirpings describe
Breathtaking arrays
Of color and light,
Celestial displays

E'en sunless sunrise
Cannot mask the aires;
A heav'nly delight
These winged marvels share

Gilt greenery grows
And turns lifted heads
To bask in warm notes
Wherever they spread

At closing of day
A grateful reprise
Again sings its way
T'ward glorious skies

While waters reflect
The same Majesty
Which rose to direct
This grand symphony

Creation began
With worship earth's heard
Sustained by God's hand
Through songs of the birds

Rebecca Hutchings
7/18/13

Share Your News!

Send your article submissions to News Director
Rick Bergmann at editorbvnews@gmail.com



**New
Patients
Welcome**

Beltsville Dental Care

John J. Moynihan, DDS, PA
10760 Rhode Island Ave.

301-937-4448

Visit us at beltsvilledentalcare.com

AUGUST 2
from 11am-2pm at
**DODGE PLAZA
MCDONALD'S**

LUNCH IS ON US!

WE'RE FEEDING THE COMMUNITY!

Money One and SUSDEWITT Management, LLC t/a
McDonald's have teamed up to provide lunch for the
community (first 300 people), with any purchase made
at the **Dodge Plaza McDonald's** at 7708 Landover
Road in Landover on our Community Appreciation Day,
Friday, August 2, 2013 between 11am- 2pm.



301-925-4600 • MoneyOneFCU.org • [facebook.com/MoneyOneFCU](https://www.facebook.com/MoneyOneFCU)
9800 Technology Way, Largo OR 6107 Greenbelt Rd, College Park

Get a \$5 gift card with proof of purchase. MUST present a receipt for purchase
made at Dodge Plaza McDonald's on 8/2/13 during 11am-2pm.

Ackerman Security Systems

We Monitor All Systems

- No charge to switch
- Use Existing Equipment
- Free \$500 Insurance Deductible Program*
- Allowance for contractual obligation

One Call...We Do It All

- Wireless Monitoring
- Virtual Keypad
- Remote Video Access
- Medical Alert
- You own the System
- Fire • Access • Video

\$18^{.95}

Monthly Rate

LOCAL COMPANY OWNED
24 HOUR MONITORING

Up to 3 Months
Free Basic
Monitoring
with this ad

Trent Vernon

301-792-9813



SINCE 1967

The sign of real security®

ACKERMAN Security Systems

ackermansecurity.com

Thousands have switched to Ackerman's Local Company Owned Monitoring. Join us for Real Security



Assurance Health Care, Inc.
Fostering Independence, Assuring Quality Care

Homecare Agency

Do you need a caregiver?
Call us today!

Services include: *Private Duty*
• *Skilled Nursing* • *Home Care*
Aides • *Companions / Sitters*
Care Coordination & More

We are looking for
qualified personnel to join
our growing industry.

Physical Therapist
& Occupational Therapist &
Live-in Caregiver (CNA/HHA)
& Medication Technician

- At least 1yr exp. in Hosp. or Nursing Home
- Current PT or OT Maryland License
- Current CPR certificate

*Apply in person

(301) 529-4569

www.assure-inc.com

Navigating the home refinancing process

(BPT) - With interest rates near historic lows, now is a good time to consider refinancing your home. Refinancing a mortgage can potentially save you money over the life of a loan. Here are a few tips to help you navigate the refinancing process:



■ **Choose a reliable and trustworthy mortgage banker**

A mortgage banker is someone you should feel comfortable with, who should be frank with you about fees, flag potential issues, and help you make choices that best fit your financial situation. But where can you find the right mortgage banker?

"A quality mortgage banker will try to understand your goals and match your situation with the best possible loan, that doesn't contain hidden fees or surprises," says TJ Freeborn, mortgage professional at Discover Home Loans. "Mortgage bankers who are not looking out for you might sell you strictly on low interest

rates or offer you a too-good-to-be-true deal without asking the proper questions or evaluating your needs."

Start by doing research online with unbiased resources. Reach out to family and friends who also have refinanced or are in the process and compare research. Also, if you know a tax advisor or a real estate professional ask them about any questions or concerns. They may be able to provide new insight to help with your decision.

■ **Do your homework on loan options.**

All mortgages are not created equally. It's important to under-

stand the components that go into determining the price of a mortgage, including points and fees, so you can accurately compare the offers. To find descriptions of home loan options, you can visit www.discover.com/home-loans/loan-options.

For instance, based on the situation you may choose an adjustable-rate mortgage versus a 15 year or 30 year fixed-rate loan. Make sure to evaluate your options with your mortgage banker and discuss what works best for you.

■ **Secure your low interest rate by locking it in.**

Interest rates change almost daily and it's important to talk to a mortgage banker about ensuring the best time to lock in your rate. If the loan process takes too long, there is a chance your approved rate may expire and therefore potentially increase. You may have the opportunity to get

REFINANCING
continues on page 10

BURTONSVILLE FUEL CO., INC.
"Family Owned & Operated Since 1955"
HEATING OIL • DIESEL

Heating & Air Conditioning
Oil Burner Service

"Be One of Our Warm Friends"
301-384-7575
www.burtonsvillfuel.com

Audiology Unlimited and College Park Hearing Services

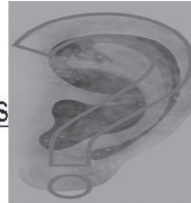
Audiologist: Your Best Hearing Aid

Audiology Unlimited
1400 Forest Glen Rd, #315
Silver Spring, MD 20910
301-754-0085
or
5749 Crain Highway
Upper Marlboro, MD 20772
301-780-6770

College Park Hearing Services
7305 Baltimore Ave, #202
College Park MD 20740
301-277-2100



Dr. Kathy Mellott, Audiologist



Most Insurances Accepted

What Is an Audiologist?

NEED MONEY?

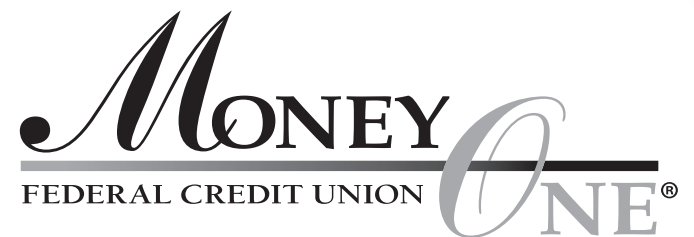
SOLUTION OUR GREAT LOW RATE **HOME EQUITY LINE**

A Money One home equity line of credit is a great way to pay for things that you have pushed aside:

- Home improvements
- Paying off high interest credit cards
- Vacation
- New car
- College tuition
- Wedding

Or whatever you need cash for.

BEST OF ALL, we have low rates with payments that fit your budget and WE PAY your closing costs up to \$1,000. Don't wait any longer - APPLY NOW!



call: 301-925-4600
online: MoneyOneFCU.org
stop by: 9800 Technology Way, Largo, MD 20774
6107 Greenbelt Rd, College Park, MD 20740



*Minimum rate 4.00% Annual Percentage Rate. Rates may be higher depending on credit history. Member reimburses Money One any paid closing costs if loan remains open less than 36 months. Interest on the loan may be tax-deductible. Check with your tax advisor.

Landlords: "Think Outside The Box"

What If You Could.....

- Quickly And Easily Find "Ideal Long-Term Tenants"
- Eliminate Vacancies
- Regain Your Time And Sanity
- Be Rid Of Repairs And Maintenance Expenses
- And Pay No Commissions Or Property Management Fee

Our rent-to-own and seller financing programs have delivered these benefits and more to hundreds just like you. We are a well established company, and have over 10,000 tenant/buyers in the DC/MD/VA area, and many looking for homes in Prince Georges and Montgomery counties.

Yvonne Grant

Director of Corporate Communications

Office: 240-643-5882

Yvonne.Grant579@gmail.com

Neighbors in the News



Mrs. Harold (Darlene) Slaybaugh of Beltsville, Md. is pleased to announce the engagement of her daughter, Lindsey Andrea Slaybaugh, to Manuel Odell Lovedahl of Cullowhee, NC. Mr. Lovedahl is the son of Virginia Lovedahl, of Sylva, NC. and Marshall Lovedahl of Franklin, NC. The bride to be is employed by Prince George's County Schools and has been teaching at Beltsville Academy. The groom to be is employed by the National Park Service, Blue Ridge District, in Asheville, NC. A July 2014 wedding is planned, after which the couple will reside in Cullowhee, NC.

REFINANCING

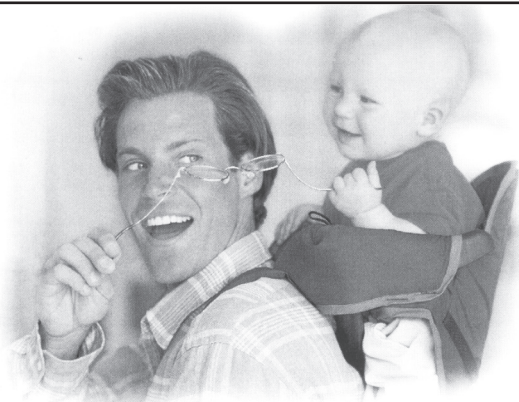
continued from page 9

an extension, but often the fee for an expired rate can be costly. Make sure to lock in your interest rate to avoid closing at a higher rate.

■ Understand the costs and fees of refinancing.

Before you jump into refinancing, make sure you understand not only the mortgage refinancing rates but the costs associated with refinancing. Closing costs generally include fees for origination, the appraisal, attorney review, lender and title, as well as insurance, taxes and escrow. Check with your mortgage banker to make sure that the closing fees are reasonable and that you are aware of all the factors that impact your refinancing cost.

Refinancing may be a worthwhile savings opportunity, but make sure to consider all of the factors before concluding it's a wise financial decision for you.



Would you be smiling if this happened to your eyeglass frame?

Yes, if you wear frames made from Flexon.

Hours: Tues. & Wed. - 9am - 7pm
Thurs. & Fri. - 9am - 6pm
Sat. - 10am - 2pm
Sun. & Mon. - CLOSED

FLEXON
BY MARCHON

Brewer & Marshall, Inc. Opticians

10490 Baltimore Ave. • Beltsville, MD 20705

301-937-3677

© 1998 Flexon® is patented and distributed by Marchon Eyewear, Inc.

DISCOUNT ROOFING & GUTTERS

No Payments
'til 2014

\$50 off Roof & Siding Repairs

ROOFS • DECKS • GUTTERS
WINDOWS • SIDING • FENCES

Low Monthly Payments FREE Estimates*

Senior and Military Discount

301-277-7200

BONDED • INSURED MHIC # 44848

www.championwindowsinc.com



CHAMPION

August at Behnke's

Crape Myrtles "Bountiful Blue" Blueberries
Blooming Sedum • Ornamental Grasses
Hardy Hibiscus • Early Bird Mums Budded for Fall

Orchid Diagnostic and Repotting Clinic w/ Carol Allen
9:00 to 4:30 in Beltsville, Saturday, August 10
Have an orchid question? Bring in your orchids and ask Carol! And for a minimal fee, she will replot your orchids.

FREE TALKS

Seed Collecting and Saving
with Carol Allen in Beltsville
Saturday, August 24 — 11 am
Learn how to harvest, clean and store vegetable and flower seed from your garden.

Bonsai Basics
with Bonsai Master Ducky Hong in Beltsville
Saturday, August 31
11 am in KOREAN — 2 pm in ENGLISH
Ducky will explain the fundamentals of Bonsai growing and upkeep and answer questions about his upcoming Beginners Bonsai Workshop.

WORKSHOP

Planning Your Fall Vegetable Gardens
with Carol Allen in Beltsville
Saturday, August 17 — 11 am
Cost: \$10/person
Measure your gardens, make a list of your containers and get ready to plan your fall vegetables with a little help from Carol. You will create your own hand-drawn plan to take home and put into action. Call (301) 937-1100 or go online at www.behnkes.com to register.

11300 Baltimore Ave., Beltsville, MD (301) 937-1100
9545 River Road, Potomac, MD (301) 983-9200
Behnke Florist at Potomac (301) 983-4400
www.Behnkes.com

Round and about the Beltsville Rotary

By John Moynihan

Dr. George Abraham, the newest member of the Rotary club, addressed the club in April. We are very pleased to add George to our ranks. A retired dentist, George has a vibrant personality and a strong work ethic. He is also a very active member of The Southern Asian SDA Church on Randolph Rd.

Lisa M. Covington, sister of member Scott Covington, gave an outstanding presentation in late April. She spoke about establishing personal boundaries, understanding the impact of stress, and developing a solid support system.

In May we had a celebratory meeting with a few of our donor recipients. In attendance were Mr. John Goon of The Beltsville Strategy Games Club; Principal Robin Wiltison of Martin Luther King, Jr. Middle School; Scoutmaster Rick Deery of BSA Troop 1033; and Pastor Daniel Mejia of The Emmanuel Methodist Church.

In June, Charter Member Karl Norris gave a nice talk about the rich history of The Beltsville Women's Club. Founded in 1922, The Beltsville Women's Club has long been a tremendous, positive force in our community.

Our Rotary Club is particularly proud of the success of our newly formed Weekend Food for



The Beltsville Rotary Club's newest member, Dr. George Abraham, with Dr. John Moynihan.

Kids Project. We worked in conjunction with CAC Food Bank, The Beltsville SDA Church, and The PG county government. For a majority of the school year, we were able to provide 52 deserv-

ROTARY CLUB
continues on page 13

Beltsville Young at Heart

By Barbara Schofield

The Beltsville Young at Heart Club had lots of fun, good food and friends, a 50/50 drawing and a raffle basket all done in Hawaiian decor at its recent picnic. We had lots of volunteers; Hugh and his wife Ella Lou ordered the platter and picked it up, Mary Hooper and Livia Foley worked hard to arrange the meat and cheese on the platter, Carol Kosydar supervised the raffle and Joanne Garrison presided over the 50/50 drawing. Barbara Wargo won the Hawaiian hat basket. The club hours are 10 a.m. until 2 p.m. Good advice is often forgotten, but a kind word is treasured forever.

KAREN M. COAKLEY, G.R.I.
"YOUR 110% REALTOR"

301-741-7672 Cell • 301-725-7004 Office



Each office independently owned and operated

Email: karenmcoakley@remax.net



Beltsville: Honey Stop the Car!!!
Brick Colonial with year round Sunroom!
4 Bdrms! 2.5 Baths! Private yard backs to Department of Agriculture Farm.



Beltsville: Let's Make a Deal!
New Price \$289,999 Looking for land?
Then this is the home for You!
Spacious Split Level.

Office: 410-715-2759

FIREMEN'S REALTY GROUP

"Knowledge You Can Trust"

ANDY BOWEN

301-237-9475

andy@frgmd.com

BELTSVILLE

THE HOME YOU HAVE BEEN WAITING FOR. Beautiful 4 Bedm 2FB2HB Colonial located in Home Acres. Offers upgrades thru-out. Walk to park or sit on your private rear enclosed deck overlooking landscaped back yard. A perfect place to call home!

EDGEWATER

Luxury Townhome in the Pointe at South River Colony Golf Community. Not enough room to describe this Special 3BR2 FB townhome. Minutes to downtown Annapolis and the water.

For Information about these or any home or to get our free SIMPLE STEPS GUIDE to Home Ownership Visit us at www.frgmd.com

IF IT'S REAL ESTATE, IT'S ROBERTA!!

ROBERTA

301-937-3124

Experienced, Reputable Distinguished Sales Club Full time professional CRS, GRI, SFR Associate Broker

Web: www.ROBERTAREALTOR.com • E-mail: rbyaklich@verizon.net • 301-262-1700

SPECTACULAR!

Home Acres subdivision, gorgeous brick home on 2/3 acre lot, updates galore...new gas hybrid furnace, new kitchen (granite and stainless), new architectural shingled roof, new windows, upgraded electric, updated baths, etc. Custom built beauty! Breathtaking backyard, totally fenced, room for pool/tennis court! Near library, schools, churches, parks!

ONLY \$379,000!

WOW!

Charming brick 3 BDRM, 2 BA Cape Cod, spacious living room, formal dining room, hardwood floors, first floor family room, fenced yard, even a garage!

ONLY \$295,900!

Too New for Photo

JUST LISTED!

Freshly painted, one floor living, 2BDRM, 2BA with great sunroom! 55+ Community in Laurel

ONLY \$179,000!

"Make Deller Your Seller"

Bette Deller

Bette Deller, CRS, GRI, SRES

Long & Foster Real Estate, Inc.

301-384-8700 x7122 (Office)
301-257-5852 (Cell)

www.bettedeller.com
bette.deller@longandfoster.com

Beltsville \$325,000

Large, beautiful, remodeled, 5 BR, 4FB colonial home facing Rhode Island Ave. New carpets & fresh paint throughout. Finished basement w/extra room, lots of storage space, entertainment center, full bath, and great laundry room with folding table & cabinets. Six-car driveway. Deck, patio, and fenced yard. Like new! Ready to move into. Great Home!

This is not intended to solicit currently listed properties

AREA EVENTS

Please contact the individual facilities for any changes in hours of operation due to holidays or inclement weather.

U. S. NATIONAL ARBORETUM

3501 New York Ave., N.E., Washington, DC 20002. See www.USNA.USDA.gov or call 202-245-2726 for information regarding special events. Due to budget cutbacks, the arboretum grounds are only open Friday – Monday from 8 a.m. to 5 p.m. Admission to the arboretum is free.

BROOKSIDE GARDENS

1800 Glenallan Ave., Wheaton, MD 20902. Phone: 301-962-1400. The grounds of Brookside Gardens are open every day of the year from sunrise to sunset. The Visitor Center is open daily from 9 a.m. to 5 p.m. Admission to the gardens is free. A fee is charged for certain exhibits and some special programs.

WINGS OF FANCY BUTTERFLY EXHIBIT

Regular hours: daily from 10 a.m. to 4 p.m. until Sunday, Sept. 22. Contact the gardens regarding climate and weather-related exceptions. This year the focus is on butterflies in your backyard and the host plants that local caterpillars need in order to survive and thrive. Be surrounded by North American, Costa Rican, and Asian butterflies flying freely inside the Conservatory. Peak visitation hours are from 10 a.m. to 1 p.m. Exhibit tickets and parking are available at the Visitors Center and Conservatories. Admission is \$6.00 for

adults and \$4.00 for ages 3 to 12. Frequent visitor passes are available for an additional charge. Children 2 and under are admitted free, however, we regret that we are not able to accommodate strollers in the Butterfly Exhibit. The exhibit is wheelchair accessible.

MONTPELIER MANSION & ART CENTER

9650 Muirkirk Rd., Laurel. Phone: 301.377.7817. TTY: 301.699.2544. E-mail: montpeliermansion@pgparks.com. Contact the Art Center at 301.377.7800 for information on art and photography classes. Due to renovation at the mansion, tours are suspended until further notice. Please call the center before visiting. Any events held at the mansion location will be held outdoors, and many regular and special events will be held at partner locations. The mansion grounds are open from dawn until dusk every day of the year.

COLLEGE PARK AVIATION MUSEUM

1985 Cpl. Frank Scott Dr., College Park. Phone: 301.864.6029. TTY: 301.699.2544. Museum admission is \$4 for adults, \$3 for seniors, and \$2 for children. Children under 2 admitted free. Open daily from 10 a.m. to 5 p.m., except for major holidays. Tours for groups of 10 or more are available by appointment.

CYCLE THROUGH AVIATION HISTORY

Saturday, Aug. 3 at 10 a.m. Rain date: Sunday, Aug. 4 at 10 a.m. Discover 250 years of flight in a guided bicycle tour along the Ana-

costia River trails, from the first balloon flight in America to intriguing 20th century inventions and industry. Participants must register through SMARTlink #1144665.

AIRMAIL DAY

Saturday, August 10 from 1 to 3 p.m. Free with museum admission. Celebrate the 95th anniversary of the first airmail flight out of College Park Airport with airmail-themed activities throughout the museum.

GREENBELT COMMUNITY CENTER

The center is located at 15 Crescent Rd., Greenbelt, MD 20770. The Greenbelt Recreation Activities Guide is online. Stop by the center or see www.greenbeltmd.gov/recreation for events and class listings. Phone: 301.397.2208.

ARTFUL AFTERNOON

Sunday, Aug. 4- 1) Make your own wind mobiles from 1 to 3 p.m. with Artist-in-Residence Karen Arrington. Repurpose and recycle materials to create decorative mobiles of your own design. Adults and children will love this activity. Open to all ages. Free; materials are provided. 2) Artists-in-Residence studio open house from 1 to 4 p.m., plus art and local history exhibits. 3) Artist reception for Subversion, a photography exhibition by Rahshia Linedoll-Sawyer will take place in the Gallery from 1:30 to 3 p.m. All ages welcome.

GREENBELT MUSEUM

The museum house is located at 10-B Cres-

cent Rd., Greenbelt, MD 20770. Docent-led tours are on Sundays from 1 to 5 p.m., please contact the museum for latest information. No reservations are required, but we do recommend that you arrive no later than 4:30 p.m. Tickets: \$3.00 general admission, \$2.00 adults 55 and older, free for children under age 12. Friends of the Greenbelt Museum are admitted free. See www.GreenbeltMuseum.org or call 301.507.6582 for more information.

LAUREL-BELTSVILLE SENIOR ACTIVITY CENTER

7120 Contee Rd., Laurel, MD 20707. Regular hours of operation: Monday – Thursday from 8 a.m. to 9 p.m., Friday from 8 a.m. to 5 p.m., Saturday from 8 a.m. to 2 p.m., closed on Sunday. Contact the center regarding any changes in hours of operation. Phone: 301.206.3350. Fax: 301.206.3387. TTY: 301.446.3402.

NATIONAL WILDLIFE VISITOR CENTER

10901 Scarlet Tanager Loop, Laurel, MD 20708. Phone and registration line: 301.497.5887. See Patuxent.fws.gov. The refuge is bursting with signs of spring. Stop by to attend a program or walk the trails and look for spring migrants and blooms. Space in our public programs is limited. Register early unless otherwise specified. Thank you for your continued support.

The Visitor Center entrance is accessed from Powder Mill Rd. between the Baltimore–Washington Pkwy. and Rt. 197. The center

is part of the Patuxent Wildlife Research Refuge. Hours of operation are daily from 9 a.m. to 4:30 p.m., except for major holidays. Free admission to the center and its exhibits, grounds, and trails. Please advise us of any special needs so that we may accommodate you.

WILDLIFE CONSERVATION TRAM TOURS

Daily at 11:30 a.m., 1 p.m., and 2 p.m. Enjoy an all-electric tram tour through various habitats on the refuge, weather permitting. Fee: \$3/person.

HOLLINGSWORTH ART GALLERY

August will feature artist John Maloney.

BELTSVILLE EVENTS

Please contact the individual facilities for any changes in hours of operation due to holidays or inclement weather.

NATIONAL AGRICULTURAL LIBRARY (NAL)

10301 Baltimore Ave. The library is free and open to the public. Parking is free. Hours of operation: Monday – Friday from 8:30 a.m. to 4:30 p.m., except for federal holidays. NAL is one of four national libraries of the United States. Call 301.504.5876 for information on basic services, resources, and special events. See NAL at www.nal.usda.gov or on Twitter at http://twitter.com/#!/National_Ag_Lib.

CALENDAR
continues on page 13

Twin Chimney's Office Park

Next to Wendy's on US-1

1,250 Square Feet For Lease

2,500 Square Feet For Sale • Two Units

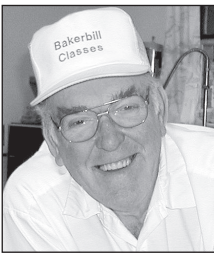
Can Sell Separately

Matzen Real Estate

Call Warren Matzen

301-928-8160 or 301-937-4730





Baker Bill

STUFF 'N THINGS

I have been doing some research on past articles so I don't plagiarize myself. I had a laugh. Last year I wrote about charcoaling two pounds of ribs. Do you remember that one? Well so far this year I haven't had any bad luck. Well, I did charcoal a hot dog. You see, I like them burnt well anyhow. I put one on and forgot it; it was dark after an hour.

What a year of weather. It seems to have rained or threatened to rain every day. I volunteer at Gunpowder golf course and the threat of bad weather hurts business. If you're a golfer like me you play Paint Branch, Sligo, and The Northwest Park inside 9 as well as Enterprise and so on. You

wait hours for a tee time but not at Gunpowder. I am the starter and the wait on weekends is never longer than 20 minutes. The course is in the best shape out of all the courses I mentioned above. There is no gravel in the fairway, the greens are smooth and quick and no crab grass. In short the rough course you played 5 years ago is gone. Come out and give it a chance.

I have had some back lash on what I wrote about hybrid cars and saving gas. Some of you agree and some disagree. The people that do not agree are the ones that own a hybrid. I, for one, do not believe enough research in batteries has been done. As a person with a dis-

ability, I cannot take a chance of being let down. When I turn the key it must go. Warrantees won't get you home.

I have for you a very good crab cake recipe, simple but tasty.

1 pound crab meat (check for shell bits) place in med bowl, crumble a slice of bread, 1 tablespoon mayonnaise, 1 tbsp parsley flakes (if you got them), 1 tablespoon old bay spice. Mix everything by hand and make into cakes or crab balls. Fry (I like to deep fry) but regular pan is fine. Note the bread is to soak up moisture. If you have questions drop me a line bill@bakerbill.net.

Baker Bill AKA W. Raulin

CALENDAR

continued from page 12

BEHNKE NURSERIES GARDEN CENTER

11300 Baltimore Ave. Please call 301.937.1100, ext. 0. or see www.Behnke.com for more information.

SEED COLLECTING AND SAVING

Saturday, Aug. 24 at 11 a.m. Gardeners have been saving seeds and starting their own plants for centuries. You can save money and enjoy the satisfaction of doing it yourself. Carol Allen will discuss how to harvest, dry, clean, and store seeds. Carol will primarily be dealing with vegetables and annual flowers but will happily entertain questions regarding perennials and woody plants.

BELTSVILLE LIBRARY

Please note: The Beltsville Library expects to close for renovation sometime this summer, possibly in August. We anticipate being closed for six months during the renovation. Please call the library for an update. Regular operating hours are Monday – Tuesday from 1 to 9 p.m., Wednesday – Friday from 10 a.m. to 6 p.m., Saturday from 10 a.m. to 5 p.m., closed on Sunday. Contact the Beltsville Library by phone at 301.937.0294. Visit us at 4319 Sellman Rd., Beltsville, next door to the police station. Visit our library system website at www.pgcmcls.info.

PROGRAM FOR EVERYONE

SUMMER READING PROGRAM NOTICE

Beltsville Branch Library will continue to register participants in Prince George's County Memorial Library System's (PGCMLS's) Summer Reading Program and issue Summer Reading prizes until we close for renovation. After we close for renovation, you may visit any PGCMLS branch to register for the program or claim prizes (through Aug.).

ROTARY CLUB

continued from page 11

ing students at Beltsville Academy with enough good food for them and their families to get through the weekends.

We are all very excited to once

PROGRAM FOR CHILDREN AND FAMILIES

STORYTIME

Story time for children ages 3 – 5 years will be held on Wednesdays at 10:30 a.m. for as long as we are open.

PROGRAM FOR ADULTS

EVENING BOOK DISCUSSION

Monday, August 12 at 7 p.m. Madeleine L'Engle's A Wrinkle in Time.

BELTSVILLE COMMUNITY CENTER

3900 Sellman Rd., Beltsville. Phone: 301.937.6613. Spanish line: 301.445.4509. TTY: 301.445.4512. The Program Specialist is Michael Hansborough. He can be contacted by phone or at Michael.Hansborough@pgparks.com. Regular hours of operation are: Monday – Thursday from 9 a.m. to 9 p.m., Friday from 9 a.m. to 7 p.m., Saturday from 9 a.m. to 4 p.m., closed on Sunday. Hours of operation for Xtreme Teens and Pre-teens: Fridays and Saturdays from 7 to 10 p.m.

NATIONAL WATERMELON DAY

Friday, Aug. 2 from 1 to 3 p.m. There is nothing like a cool piece of watermelon during the hot summer months. So come in and have a slice of watermelon on us as we celebrate National Watermelon Day (a day early) here at the center! Free. All ages welcome.

JAZZ UNDER THE STARS: PART 2

Saturday, Aug. 10 at 7 p.m. This will be an outdoor event. Join us for the final concert of the summer concert series here at the Beltsville Community Center featuring Project Natale. This is a free event so bring a picnic basket, a chair, a friend — and come and have a great time! This event will go on rain or shine. No alcoholic beverages permitted in the park. Free. All ages welcome.

STRATEGY GAME CLUB

Mondays from 7 to 9 p.m. Enjoy board

again partner with The Greater Beltsville Business Association in hosting The 2nd Annual Beltsville Charity Golf Tournament. The event will be held on Sept. 13, 2013 at Cross Creek Golf Club. Get your foursomes together now,

games and strategy games and tons of fun. All skill levels welcome. Any game can be played as well as brought to the club to be played. Games include: Small World, Steel Driver, and Age of Industry. Free for all ages.

XTREME TEEN REGULAR EVENTS

Fridays and Saturdays from 7 to 10 p.m. Free with valid Center ID card. Ages 13 – 17.

VANSVILLE COMMUNITY CENTER

6813 Ammendale Rd., Vansville. Phone: 301.937.6621. Fax: 301.937.6623. Spanish line: 301.445.4509. TTY: 301.445.4512. The Director is Jeremy Weiss. He can be contacted by phone or at Jeremy.Weiss@pgparks.com. Regular hours of operation: Monday – Thursday from 2 to 9 p.m., Friday from 2 p.m. to 7 p.m., Saturday from 9 a.m. to 7 p.m., and Sunday from 12 noon to 3 p.m. Hours of operation for First Ladies of V-ville: Fridays and Saturdays from 7:30 to 8:30 p.m. Hours of operation for Xtreme Teens: Fridays and Saturdays from 7 to 10 p.m.

END OF SAFE SUMMER SPASH BASH

Saturday, Aug. 10 from 5 p.m. to 9 p.m. Join us at Rollingcrest Community Center as we say goodbye to Safe Summer. Food, friends, music, swimming, and more! Ages 12 – 17. Free with M-NCPCC Youth Card. Call the Vansville Community Center for more details.

NEIGHBORHOOD CLEAN TEAM

Wednesday, Aug. 14 from 3:30 to 5:30 p.m. Come out and join us to clean the environment around the community center and the elementary school. Help us to keep Vansville beautiful. Volunteers will receive credit for attending. All ages welcome. Register by August 7. Free.

FIRST LADIES OF V-VILLE

Fridays and Saturdays from 7:30 to 8:30 p.m. Activities just for girls: Join us for V-ville ladies sports nights, empowerment workshops, modeling, and more. Free. Ages 10 – 17.



Pest Patrol

Residential and Commercial Pest Control (Including Termite Services)

Cheryl Scruggs
(301) 775-9638
Kelvin Scruggs
(301) 775-6169



Got Bugs-Call Scruggs

*Discounts 5% : 1st Time customers, Military and Seniors

ELEANOR PERNIA Studio of Dance

Register Now • Dance Classes for All Ages

Tap, Ballet,
Hip Hop,
Modern Jazz,
Preschool Dance,
Salsa, Belly Dance

Small class sizes
All levels

Brand new to
dance classes?
Call us to find out
4 things every parent
should know before
choosing a dance studio



Registration for Fall Classes will be
Thursday, August 22, 2013 from 5:00 p.m.-7:00 p.m.
Saturday, August 24, 2013 from 10:00 a.m. – 12:00 p.m.

301-937-4230

www.eleanorperniadance.com

Beltsville News CHURCH DIRECTORY

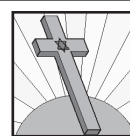
Iglesia Pentecostés Sináí

10800F Rhode Island Ave, Beltsville, MD 20705

Le invita a sus poderosos servicios
Martes Oración | 7:30 - 9:00p.m
Viernes Evangelístico | 7:00 - 9:00p.m
Domingo Alabanza y Adoración | 4:00 - 7:00p.m

El Pastor Elvin Moscoso y la congregación te dan la bienvenida.
Ven y gózate con nosotros

301-379-3945



MARVELOUS LIGHT CHRISTIAN WORSHIP CENTER

"A Multicultural Church that seeks to Find the Lost and Grow the Found"

Come worship with us on Sundays at 11:00 a.m. at:
4216 Powder Mill Road,
Beltsville, MD 20705

Email: MarvelousLightCWC@yahoo.com
Website: www.marvelouslightcwc.com

Rev. Wyndell O. Banks, Senior Pastor

Beltsville News CHURCH DIRECTORY

Greater Faith Outreach Ministries

Reaching - Renewing - Restoring
Hebrews 10:16-25



Jesus heals the pain others can't reach... Come and believe GOD with us

Sunday School - 9:30 am
Sunday Worship - 10:45 am
Tuesday Bible Study - 7:30 pm

EVERYONE WELCOME
EVERYONE WELCOME

Elder Shirley M. Battle, Pastor
Elder Michael E. Battle, Overseer

5000 Sunnyside Avenue, Suite 101
Beltsville, MD 20705

You may call us: 202-359-0908

E-mail: sbattle@greaterfaithoutreachministries.com
<http://greaterfaithoutreachministries.com>



Abiding Presence Lutheran Church

10774 Rhode Island Avenue
301-937-7646



Sunday Worship:
9:30 a.m. in English
10:30 Coffee and Social Hour
11:00 a.m. in Korean
Rev. Jongkil Na
www.APLChurch.org

Come and Join Us

Located in the Beltsville Professional Center


 A Mission Parish of the Russian Orthodox Church Outside Russia
 Located in Twin Chimneys Office Park
 10760 Baltimore Ave, Beltsville, MD
 Evening Vigil: Sat. 5:00 PM
 Hours & Divine Liturgy: Sun. 9:40 AM
 All Services in English
 Fr. George Johnson, Rector
 301-572-5738
www.holyapostlesorthodoxchurch.org
Holy Apostles Orthodox Church
 Come and see.

St. John's Episcopal/Anglican Church

at the corner of Route 1 & Powder Mill Road in Beltsville
(301) 937-4292

The Rev. Paula E. Clark, Rector



Sunday Worship Schedule

Quiet service: 8:00 a.m.

Family-oriented service: 10:00 a.m.

Sunday School: 9:45 a.m.

Between September and June

*We are a beacon of Christ's love
offering hospitality and sustenance
to all on their spiritual way.*

First Baptist Church of Beltsville (SBC)

4700 Odell Road Beltsville, MD 20705
301-937-7771

www.fbcbeltsville.org

Keith Holland, Pastor

Mother's Morning Out Program

Classes held on Tues/Thurs mornings 8:30 – 11:30 a.m.

Register now for classes starting on 9/10/13

Child must be 2 or 3 years by 9/1/13

To register or for more information,

Call 301-937-7771

Sundays:

Sunday School for all ages	9:45am
*Morning Worship	11:00am
*Evening Worship Activities	6:00pm
Adult Choir Practice	7:00pm

Wednesdays:

*Adult Bible Study & Prayer	7:00pm
RA's & GA's (4-yr old - 6th grade)	7:00pm
Youth Fellowship (7th - 12th grade)	7:00pm

*Childcare available for children up to 4 years old

Worshiping every

Saturday
Sabbath

You're invited to join us for worship some Saturday morning—at whichever service best fits your needs.

*Saturday Services
9:30am and 12:00pm*

Vacation Bible School

Let your kids have the thrill of Vacation Bible School.

Every morning, from 9 to noon. Starting on Monday, July 29, and continuing through Saturday, August 3.

Free! Register at the Beltsville Adventist Church on Monday.



All events are free!

Worship	9:30am & 12:00pm
Adult Bible Classes	10:45am
Children's Classes	10:45am

 BELTSVILLE SEVENTH-DAY ADVENTIST CHURCH
4200 Ammendale Road • Beltsville MD 20705
301-937-8118

Pastor: Dr. Kermit Netteburg
Associate Pastor: Sonia Perez
Associate Pastor: Donna Holland
Associate Pastor: Glenn Holland

*Connecting people with God,
with each other,
and with the community.*

Share Your News!

Send your neighborhood news items to
editorbvnews@gmail.com

EMMANUEL UNITED METHODIST CHURCH

11416 Cedar Lane Beltsville, MD 20705

301-937-7114

office@emmanuelumcbeltsville.net

www.emmanuelumcbeltsville.net

Pastor Daniel Mejia

Join us every Sunday for Worship

9:00 Contemporary Service with praise band and communion each week.

10:15 Sunday School and Bible Study for all ages

11:15 Traditional Service with Chancel Choir and sign language interpretation each week.

Together We Can Make A Difference!



Classifieds • Call 301-937-7954

SERVICES

BELTSVILLE LAWNS - For all your lawn and landscaping needs. We are a full service, year around Beltsville business. We offer: topsoil and mulch deliveries, tree and shrub trimming, gutter cleaning, yard clean-ups, mowing, thatching, aeration, flower bed edging and much more. Call Bill 301-455-4491. 12/13.

TAX RETURNS - For businesses/individuals. Payrolls. Gerald Neumaier CPA. 301-953-1341; 301-776-6545. gncpa@verizon.net. 01/14.

TREE AND STUMP REMOVAL. Pruning, land clearing, contact Bob Berra, 301-674-3770; or 301-384-4746. 05/15

HANDYMAN SERVICES. Fix-it-ups, spring clean-up, repairs, gardening, hauling, tile work, etc. Experienced, reliable, inexpensive. Buster, 301-806-0419. 07/13

week, once or twice a month or whenever you can? Please call Monday thru Friday, 301-474-1002 to help and for more information. 08/13

CARPENTER, HANDYMAN, Clogged sink & Tub Drains cleaned & snaked out, Drywall, Ceilings, Door locks, Rotten wood replacement, Wood fence repairs, Demolition, Roofs & Leaks, Repairs, Gutters cleaned out, Vinyl siding, Window wraps, Down trees cut & removed, Dryer lint cleanouts. Free estimate, call Mickey 240-286-7934 or 301-345-9124 07/13

HAULING AND JUNK REMOVAL. Complete Clean Out - Garages, Homes, Construction Debris, etc. Licensed, insured, free estimates. Mike Smith 301-346-0840. 07/13

PET SITTING. Professional, in your home. Beltsville-based since 1994. Caring for dogs, cats, small and exotic pets. Medications administered. Insured, bonded, certifications, references. Book now for spring, summer travel. www.terrappets.com. 12/13

WANTED

SCRAP METAL OF ALL KINDS - A/C units, washer/dryers, lawn furniture, etc. Free pickup in some cases. Call Speedy @ 301-377-1937. 08/13

FOR SALE

BALDWIN fanfare organ, - roughly 44" L x 24" W x 36.5" H. Call 301-937-7954. Leave message for call back. \$75.00.

HOUSECLEANING
Housecleaning done weekly, bi-weekly, free estimates and references available. Call Brenda, 202-322-7452. 08/13

HELP WANTED

WELDING. Reasonable rates. Call Rick 301-931-3034. 07/14

MEALS ON WHEELS OF COLLEGE PARK is now accepting new customers. Meals are delivered to your door Monday thru Friday between the hours of 11:30 am and 12:30 pm. Each daily delivery consists of a hot meal, a bread pack (with coffee, tea and other condiments), a sandwich, salad, fruit, juice and milk. The price is \$25.00 a week. To enroll or to get answers to any of your questions, please call Meals on Wheels of College Park at 301-474-1002 Monday thru Friday 9 am to noon. 08/13

MEALS ON WHEELS OF COLLEGE PARK - serving Beltsville, Adelphi, Berwyn Heights, Greenbelt and College Park - needs volunteers to help pack daily meals for seniors and those who cannot cook for themselves. We also need drivers Monday thru Friday. Packers work from 9 a.m. to 11:30 a.m. Drivers and runners work from 11 a.m. to 12:30 p.m. Please, we need help. Won't you volunteer to work one day a

Reach your Beltsville neighbors with a low-cost classified ad in The Beltsville News Call 301-937-7954

I PAY CASH FOR OLD RECORDS



Albums and 45s from 50s, 60s, 70s
Highest Prices Paid

Call Tom at (410) 533-1057

LESTER E. GROSS
Beltsville, MD.

BELTSVILLE REFUSE SERVICE

By the Job or by the Month
Dependable Reliable

937-5932

LUIZ'S LAWN SERVICE
Friendly service with competitive prices!
Lawn mowing
Mulching
Gutter cleaning
Spring & Fall cleanup
Snow removal and more!
For free estimate call
301-928-6695

CPR & First Aid Training
We offer day and evening classes every Saturday. Weekdays by appointment only. Please call to sign up. No walk-ins accepted
301-529-4569
cpraedandfirstaid.net

COUNSELING CENTER



Create Healthy Relationships
Feel Better - Enjoy Life
Ginny Hurney, LCSW-C
Beltsville & Silver Spring offices
301-595-5135
WOMEN, MEN, COUPLES & TEENS

ED LUNDQUIST
HOME IMPROVEMENT & REPAIR SPECIALIST
(301) 775-9001

For all types of jobs around your home

Painting	Drywall	Gutters	Electrical	Flooring
Carpentry	Cement	Fences	Plumbing	Door Locks
Flooring	Ceramic Tile	Drain Cleaning	Power Washing	

NO JOB TOO SMALL

Beltsville Resident since 1985 Maryland Home Improvement License

BELTSVILLE VOLUNTEER FIRE DEPARTMENT




4911 Prince George's Avenue
240-888-4043



HALL RENTAL
Experienced Catering by Ladies Auxiliary!
WEDDING RECEPTIONS, BANQUETS, BIRTHDAY PARTIES, BRIDAL SHOWERS OR ANY OTHER OCCASION

Do You Need Cash?



A-1 PAWN BROKERS
IMMEDIATE CASH!!!
WE BUY, SELL AND PAWN
GOLD, SCRAP JEWELRY, GUNS AND MORE
4938 Edgewood Rd. • College Park • 301-345-0858

IF IT'S ELECTRICAL WORK YOU NEED US!

Az/GHE Electrical Services
Family Owned & Operated Since 1964
11222 Old Baltimore Pike
Beltsville, Maryland 20705
301-937-5051 • Fax 301-937-5054

Let Our Family of Skilled Electrician's Serve You
Joseph J. Panizari, Sr. Dino S. Panizari
Joseph J. Panizari, Jr. Pamela S. Panizari, CFO
Richard A. Panizari Janet Ashley, Office Manager




Everything Electrical from Basement to Attic
Service Heavy Ups - Our Specialty
Replace Fuse Box with Circuit Breaker Box

Residential & Commercial
Licensed & Insured

ANTI-AGING AND WEIGHT LOSS CLINIC
EXPERTS IN HIGH BLOOD PRESSURE
DIABETES and CANCER SCREENING

Call 301-562-8930 for appointment
Beltsville and Downtown Silver Spring Offices

book your summer pet care now!
professional pet care in your home



terrappin pets llc
bonded * insured * certifications * references
terrappinpets@gmail.com www.terrappinpets.com
beltsville office 202-528-3271

CANINE TRAINING ASSOCIATION
A hobby dog-training club since 1950
Evening and Saturday Classes in Beltsville starting about every 5 weeks.
Puppy or Basic Classes - \$75 for 10 weeks
Also Agility and Advanced Obedience Classes
(410) 573-6556 or (301) 925-7360

HALL RENTALS
(CATERING)

Luncheons—B'Day Parties—Anniversaries—Weddings

College Park American Legion—Post 217
9218 Baltimore Blvd. (301) 441-2783
College Park, MD 20740



Contact Gary Kingery



SPRUCE UP YOUR... *Staycation Spot*



RATES
as low as
4% APR*

**Bring your inspiration to the credit union
and we'll provide the summer fun(ds).**

- Home Equity Lines of Credit and 2nd Trusts
- Rates as low as 4%*
- No closing costs
- No appraisal fees
- Quick loan turn around time

All you need is equity in your home and a great idea on how to make it better. Plus, come in for your loan now and you can spin the wheel to win seasonal prizes, including a chance to win a grand prize: Backyard seasonal items.**

Is your home your sanctuary?

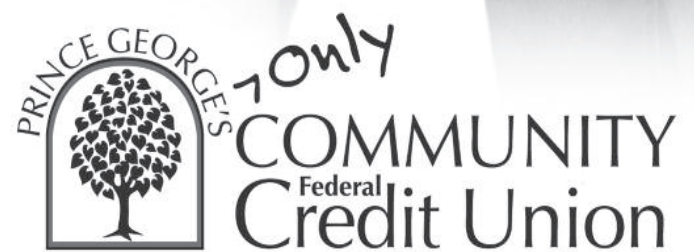
Would it be better with a patio, porch, pool, hot tub, garden or built-in grill? Do you have other ideas to make your outdoor space a real living space?



6985 Muirkirk Meadows Drive,
Beltsville, MD 20705

OTHER LOCATIONS

15201 Hall Road • Bowie, MD 20721
County Administration Building
14741 Governor Oden Bowie Drive, RM-L210
Upper Marlboro, MD 20772



Partnering for Financial Success